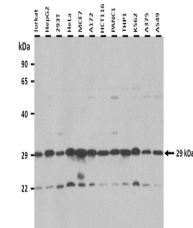


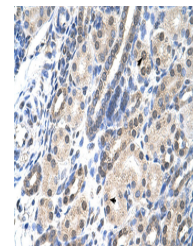
Product Datasheet

MSX2 antibody (orb576549)

Description	Rabbit polyclonal antibody to MSX2
Species/Host	Rabbit
Reactivity	Human
Conjugation	Unconjugated
Tested Applications	IHC, WB
Immunogen	The immunogen is a synthetic peptide directed towards the N terminal region of human MSX2
Target	MSX2
Preservatives	Liquid. Purified antibody supplied in 1x PBS buffer with 0.09% (w/v) sodium azide and 2% sucrose.
Form/Appearance	Liquid. Purified antibody supplied in 1x PBS buffer with 0.09% (w/v) sodium azide and 2% sucrose.
Concentration	1.0 mg/ml
Storage	Maintain refrigerated at 2-8°C for up to 2 weeks. For long term storage store at -20°C in small aliquots to prevent freeze-thaw cycles.
Note	For research use only
Protein Sequence	Synthetic peptide located within the following region: MASPSKGNLDFSPDEEGPAVVAGPGPGGGAEGAAEERRVKVSSLPFSVE
Clonality	Polyclonal
MW	29kDa
Uniprot ID	P35548
NCBI	NP_002440
Expiration Date	12 months from date of receipt.



25 ug of the indicated Human whole cell ...



Human kidney



WB Suggested Anti-MSX2 Antibody Titratio...