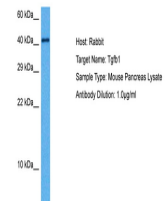


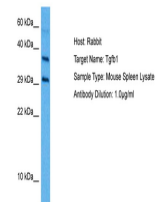
Product Datasheet

TGF beta 1 antibody (orb576457)

Description	Rabbit polyclonal antibody to TGF beta 1
Species/Host	Rabbit
Reactivity	Human, Mouse
Conjugation	Unconjugated
Tested Applications	IF, IHC, WB
Immunogen	The immunogen is a synthetic peptide directed towards the middle region of mouse TGFB1
Target	TGFB1
Preservatives	Liquid. Purified antibody supplied in 1x PBS buffer with 0.09% (w/v) sodium azide and 2% sucrose.
Form/Appearance	Liquid. Purified antibody supplied in 1x PBS buffer with 0.09% (w/v) sodium azide and 2% sucrose.
Concentration	0.5 mg/ml
Storage	Maintain refrigerated at 2-8°C for up to 2 weeks. For long term storage store at -20°C in small aliquots to prevent freeze-thaw cycles.
Note	For research use only
Protein Sequence	Synthetic peptide located within the following region: DTPEWLSFDVTGVVRQWLNQGDGIQGFSAHCSCDSKDNKLHVEINGIS
Clonality	Polyclonal
MW	43kDa
Uniprot ID	P04202
NCBI	NP_035707
Expiration Date	12 months from date of receipt.

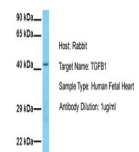


Host: Mouse,
Target Name:
TGFB1, Sample
...



Host: Mouse,
Target Name:
TGFB1, Sample
...

TGFB1



Host: Rabbit,
Target Name:
TGFB1,
Sample...