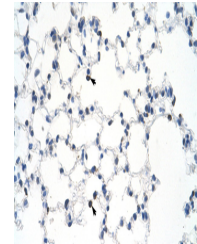


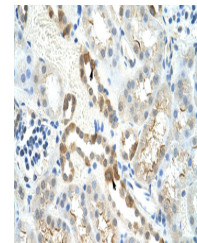
Product Datasheet

MYBBP1A antibody (orb576248)

| | |
|----------------------------|---|
| Description | Rabbit polyclonal antibody to MYBBP1A |
| Species/Host | Rabbit |
| Reactivity | Mouse |
| Conjugation | Unconjugated |
| Tested Applications | IHC, WB |
| Immunogen | The immunogen is a synthetic peptide directed towards the C terminal region of mouse MYBBP1A |
| Target | MYBBP1A |
| Preservatives | Liquid. Purified antibody supplied in 1x PBS buffer with 0.09% (w/v) sodium azide and 2% sucrose. |
| Form/Appearance | Liquid. Purified antibody supplied in 1x PBS buffer with 0.09% (w/v) sodium azide and 2% sucrose. |
| Concentration | 1.0 mg/ml |
| Storage | Maintain refrigerated at 2-8°C for up to 2 weeks. For long term storage store at -20°C in small aliquots to prevent freeze-thaw cycles. |
| Note | For research use only |
| Protein Sequence | Synthetic peptide located within the following region: DAVTEGAMPAATGKDQPPSTGKKKRKRVKASTPSQVNGITGAKSPAPSNP |
| Clonality | Polyclonal |
| MW | 148kDa |
| Uniprot ID | Q7TPV4 |
| NCBI | NP_058056 |
| Expiration Date | 12 months from date of receipt. |



Mouse Kidney



Mouse Lung



WB Suggested
Anti-MYBBP1A
Antibody Titra...