

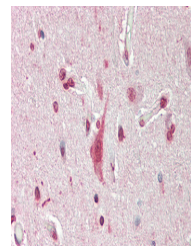
Product Datasheet

Mxi1 antibody (orb576104)

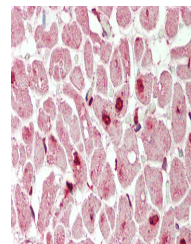
Description	Rabbit polyclonal antibody to Mxi1
Species/Host	Rabbit
Reactivity	Human, Mouse
Conjugation	Unconjugated
Tested Applications	WB
Immunogen	The immunogen is a synthetic peptide directed towards the N-terminal region of Mouse Mxi1
Target	Mxi1
Preservatives	Liquid. Purified antibody supplied in 1x PBS buffer with 0.09% (w/v) sodium azide and 2% sucrose.
Form/Appearance	Liquid. Purified antibody supplied in 1x PBS buffer with 0.09% (w/v) sodium azide and 2% sucrose.
Concentration	0.5 mg/ml
Storage	Maintain refrigerated at 2-8°C for up to 2 weeks. For long term storage store at -20°C in small aliquots to prevent freeze-thaw cycles.
Note	For research use only
Protein Sequence	Synthetic peptide located within the following region: KEARCEGAGLVPVAPPAMPPAAAAAPQPPAQPEEPAGAKPRCPFSDIFNTS
Clonality	Polyclonal
MW	33kDa
Uniprot ID	Q3U3X2
NCBI	NP_001008542
Expiration Date	12 months from date of receipt.



Host: Rabbit,
Target Name:
Mxi1, Sample ...



Rabbit Anti-Mxi1 antibody, Formalin Fixe...



Rabbit Anti-Mxi1 antibody, Formalin Fixe...