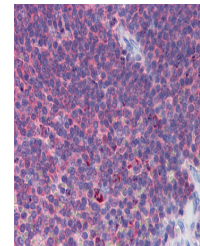


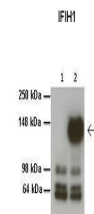
Product Datasheet

IFIH1 antibody (orb575983)

Description	Rabbit polyclonal antibody to IFIH1
Species/Host	Rabbit
Reactivity	Human
Conjugation	Unconjugated
Tested Applications	IHC, WB
Immunogen	The immunogen is a synthetic peptide directed towards the middle region of human IFIH1
Target	IFIH1
Preservatives	Liquid. Purified antibody supplied in 1x PBS buffer with 0.09% (w/v) sodium azide and 2% sucrose.
Form/Appearance	Liquid. Purified antibody supplied in 1x PBS buffer with 0.09% (w/v) sodium azide and 2% sucrose.
Concentration	0.5 mg/ml
Storage	Maintain refrigerated at 2-8°C for up to 2 weeks. For long term storage store at -20°C in small aliquots to prevent freeze-thaw cycles.
Note	For research use only
Protein Sequence	Synthetic peptide located within the following region: QINDTIRMIDAYTHLETIFYNEEKDKKFAVIEDDSDEGGDDEYCDGDEDED
Clonality	Polyclonal
MW	117kDa
Uniprot ID	Q9BYX4
NCBI	NP_071451
Expiration Date	12 months from date of receipt.



IHC Information:
Paraffin embedded splee...



Lanes: 1: 20 ug HEK293T no transfection,...



WB Suggested Anti-IFIH1 Antibody Titrati...