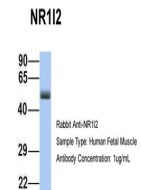


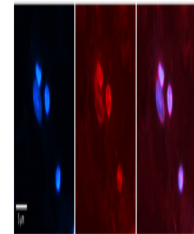
Product Datasheet

NR112 antibody (orb575749)

Description	Rabbit polyclonal antibody to NR112
Species/Host	Rabbit
Reactivity	Human
Conjugation	Unconjugated
Tested Applications	IHC, WB
Immunogen	The immunogen is a synthetic peptide directed towards the N terminal region of human NR112
Target	NR112
Preservatives	Liquid. Purified antibody supplied in 1x PBS buffer with 0.09% (w/v) sodium azide and 2% sucrose.
Form/Appearance	Liquid. Purified antibody supplied in 1x PBS buffer with 0.09% (w/v) sodium azide and 2% sucrose.
Concentration	0.5 mg/ml
Storage	Maintain refrigerated at 2-8°C for up to 2 weeks. For long term storage store at -20°C in small aliquots to prevent freeze-thaw cycles.
Note	For research use only
Protein Sequence	Synthetic peptide located within the following region: EVRPKESWNHADDFVHCEDTESVPGKPSVNADEEVGGPQICRVCGDKATGY
Clonality	Polyclonal
MW	50kDa
Uniprot ID	O75469
NCBI	NP_003880
Expiration Date	12 months from date of receipt.



Host: Rabbit,
Target Name:
NR112,
Sample...



Rabbit Anti-NR112 Antibody,
Catalog Num...



WB Suggested
Anti-NR112
Antibody
Titrati...