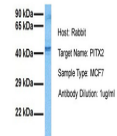


Product Datasheet

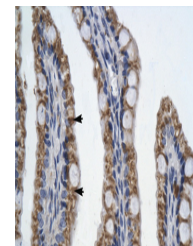
PITX2 antibody (orb575561)

Description	Rabbit polyclonal antibody to PITX2
Species/Host	Rabbit
Reactivity	Human
Conjugation	Unconjugated
Tested Applications	IHC, WB
Immunogen	The immunogen is a synthetic peptide directed towards the N terminal region of human PITX2
Target	PITX2
Preservatives	Liquid. Purified antibody supplied in 1x PBS buffer with 0.09% (w/v) sodium azide and 2% sucrose.
Form/Appearance	Liquid. Purified antibody supplied in 1x PBS buffer with 0.09% (w/v) sodium azide and 2% sucrose.
Concentration	1.0 mg/ml
Storage	Maintain refrigerated at 2-8°C for up to 2 weeks. For long term storage store at -20°C in small aliquots to prevent freeze-thaw cycles.
Note	For research use only
Protein Sequence	Synthetic peptide located within the following region: SAVSSSSCHHPQLAMASVLAPGQPRSLDSSKHRLEVHTISDTSSPEAAE
Clonality	Polyclonal
MW	36kDa
Uniprot ID	Q99697
NCBI	NP_000316
Expiration Date	12 months from date of receipt.

PITX2



Host: Rabbit,
Target Name:
PITX2, Sample...



Human
Intestine



WB Suggested
Anti-PITX2
Antibody
Titrati...