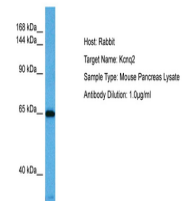


Product Datasheet

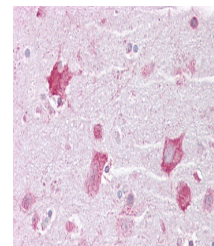
KCNQ2 antibody (orb575496)

Description	Rabbit polyclonal antibody to KCNQ2
Species/Host	Rabbit
Reactivity	Hamster, Human, Mouse
Conjugation	Unconjugated
Tested Applications	IHC, WB
Immunogen	The immunogen is a synthetic peptide directed towards the N terminal region of human KCNQ2
Target	KCNQ2
Preservatives	Liquid. Purified antibody supplied in 1x PBS buffer with 0.09% (w/v) sodium azide and 2% sucrose.
Form/Appearance	Liquid. Purified antibody supplied in 1x PBS buffer with 0.09% (w/v) sodium azide and 2% sucrose.
Concentration	0.5 mg/ml
Storage	Maintain refrigerated at 2-8°C for up to 2 weeks. For long term storage store at -20°C in small aliquots to prevent freeze-thaw cycles.
Note	For research use only
Protein Sequence	Synthetic peptide located within the following region: IDIMVLIASIAVLAAGSQGNVFATSALRSLRFLQILRMIRMDRRGGTWKL
Clonality	Polyclonal
MW	44kDa
Uniprot ID	Q53Y30
NCBI	NP_742107
Expiration Date	12 months from date of receipt.

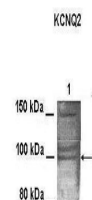


Host: Mouse, Target Name: KCNQ2, Sample

...



Immunohistochemistry with Brain, cortex ...



Lanes: 100 ug CHO cell lysate, Primary A...