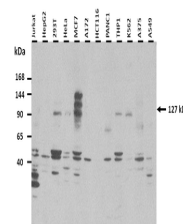


Product Datasheet

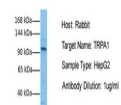
TRPA1 antibody (orb575403)

Description	Rabbit polyclonal antibody to TRPA1
Species/Host	Rabbit
Reactivity	Human, Mouse, Rat
Conjugation	Unconjugated
Tested Applications	IF, IHC, WB
Immunogen	The immunogen is a synthetic peptide directed towards the middle region of human TRPA1
Target	TRPA1
Preservatives	Liquid. Purified antibody supplied in 1x PBS buffer with 0.09% (w/v) sodium azide and 2% sucrose.
Form/Appearance	Liquid. Purified antibody supplied in 1x PBS buffer with 0.09% (w/v) sodium azide and 2% sucrose.
Concentration	0.5 mg/ml
Storage	Maintain refrigerated at 2-8°C for up to 2 weeks. For long term storage store at -20°C in small aliquots to prevent freeze-thaw cycles.
Note	For research use only
Protein Sequence	Synthetic peptide located within the following region: KCTDRLDEDGNTALHFAAREGHAKAVALLLSHNADIVLNKQQASFLHLAL
Clonality	Polyclonal
MW	127 kDa
Uniprot ID	O75762
NCBI	NP_015628
Expiration Date	12 months from date of receipt.

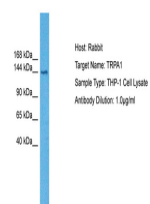


25 ug of the indicated Human whole cell ...

TRPA1



Host: Rabbit,
Target Name:
TRPA1,
Sample...



Host: Rabbit,
Target Name:
TRPA1,
Sample...