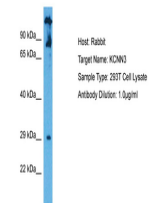


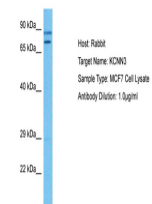
Product Datasheet

KCNN3 antibody (orb575370)

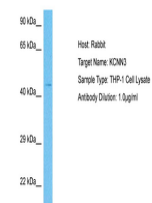
Description	Rabbit polyclonal antibody to KCNN3
Species/Host	Rabbit
Reactivity	Human, Monkey, Mouse
Conjugation	Unconjugated
Tested Applications	IHC, WB
Immunogen	The immunogen is a synthetic peptide directed towards the C terminal region of human KCNN3
Target	KCNN3
Preservatives	Liquid. Purified antibody supplied in 1x PBS buffer with 0.09% (w/v) sodium azide and 2% sucrose.
Form/Appearance	Liquid. Purified antibody supplied in 1x PBS buffer with 0.09% (w/v) sodium azide and 2% sucrose.
Concentration	0.5 mg/ml
Storage	Maintain refrigerated at 2-8°C for up to 2 weeks. For long term storage store at -20°C in small aliquots to prevent freeze-thaw cycles.
Note	For research use only
Protein Sequence	Synthetic peptide located within the following region: ITELNDRSEDLEKQIGSLESKLEHLTASFNSLPLLIADTLRQQQQQLLSA
Clonality	Polyclonal
MW	81kDa
Uniprot ID	Q9UGI6
NCBI	NP_002240
Expiration Date	12 months from date of receipt.



Host: Rabbit,
Target Name:
KCNN3,
Sample...



Host: Rabbit,
Target Name:
KCNN3,
Sample...



Host: Rabbit,
Target Name:
KCNN3,
Sample...