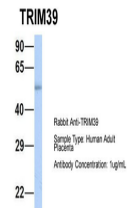


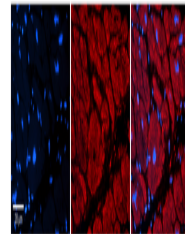
Product Datasheet

TRIM39 antibody (orb575247)

Description	Rabbit polyclonal antibody to TRIM39
Species/Host	Rabbit
Reactivity	Animal, Bovine, Canine, Guinea pig, Human, Mouse, Rat
Conjugation	Unconjugated
Tested Applications	IHC, WB
Immunogen	The immunogen is a synthetic peptide directed towards the middle region of human TRIM39
Target	TRIM39
Preservatives	Liquid. Purified antibody supplied in 1x PBS buffer with 0.09% (w/v) sodium azide and 2% sucrose.
Form/Appearance	Liquid. Purified antibody supplied in 1x PBS buffer with 0.09% (w/v) sodium azide and 2% sucrose.
Concentration	0.5 mg/ml
Storage	Maintain refrigerated at 2-8°C for up to 2 weeks. For long term storage store at -20°C in small aliquots to prevent freeze-thaw cycles.
Note	For research use only
Protein Sequence	Synthetic peptide located within the following region: GELKRLVESRRQILREFEELHRRLDDEEQVLLSRLEEEEQDILQRLREN
Clonality	Polyclonal
MW	60kDa
Uniprot ID	Q9HCM9
NCBI	NP_067076
Expiration Date	12 months from date of receipt.



Host: Rabbit,
Target Name:
TRIM39,
Sampl...



Rabbit Anti-
TRIM39
Antibody,
Catalog Num...



WB Suggested
Anti-TRIM39
Antibody
Titrat...