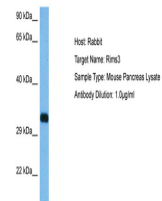


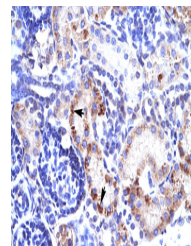
Product Datasheet

RIMS3 antibody (orb575233)

Description	Rabbit polyclonal antibody to RIMS3
Species/Host	Rabbit
Reactivity	Human, Mouse
Conjugation	Unconjugated
Tested Applications	IHC, WB
Immunogen	The immunogen is a synthetic peptide directed towards the C terminal region of human RIMS3
Target	RIMS3
Preservatives	Liquid. Purified antibody supplied in 1x PBS buffer with 0.09% (w/v) sodium azide and 2% sucrose.
Form/Appearance	Liquid. Purified antibody supplied in 1x PBS buffer with 0.09% (w/v) sodium azide and 2% sucrose.
Concentration	1.0 mg/ml
Storage	Maintain refrigerated at 2-8°C for up to 2 weeks. For long term storage store at -20°C in small aliquots to prevent freeze-thaw cycles.
Note	For research use only
Protein Sequence	Synthetic peptide located within the following region: IMLDELDSLAAVTGWYKLFPTSSVADSTLGLTRRLSQSSLESATSPSCS
Clonality	Polyclonal
MW	33kDa
Uniprot ID	Q9UJD0
NCBI	NP_055562
Expiration Date	12 months from date of receipt.



Sample Tissue:
Mouse
Pancreas,
Antibody ...



Human kidney



WB Suggested
Anti-RIMS3
Antibody
Titrati...