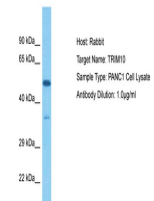


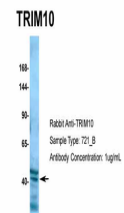
Product Datasheet

TRIM10 antibody (orb575077)

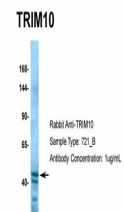
Description	Rabbit polyclonal antibody to TRIM10
Species/Host	Rabbit
Reactivity	Human
Conjugation	Unconjugated
Tested Applications	WB
Immunogen	The immunogen is a synthetic peptide directed towards the C terminal region of human TRIM10
Target	TRIM10
Preservatives	Liquid. Purified antibody supplied in 1x PBS buffer with 0.09% (w/v) sodium azide and 2% sucrose.
Form/Appearance	Liquid. Purified antibody supplied in 1x PBS buffer with 0.09% (w/v) sodium azide and 2% sucrose.
Concentration	1.0 mg/ml
Storage	Maintain refrigerated at 2-8°C for up to 2 weeks. For long term storage store at -20°C in small aliquots to prevent freeze-thaw cycles.
Note	For research use only
Protein Sequence	Synthetic peptide located within the following region: RVSLDYEVGWVFTTNAVTTREPIYFTTASFTRKVIPIFFGLWGRGSSFSLSLSS
Clonality	Polyclonal
MW	55kDa
Uniprot ID	Q9UDY6
NCBI	NP_006769
Expiration Date	12 months from date of receipt.



Host: Rabbit,
Target Name:
TRIM10,
Sampl...



Host: Rabbit,
Target Name:
TRIM10,
Sampl...



Host: Rabbit,
Target Name:
TRIM10,
Sampl...