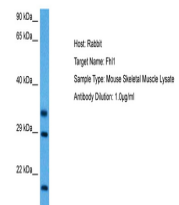


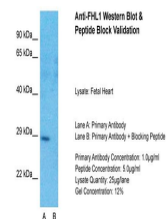
Product Datasheet

FHL1 antibody (orb575057)

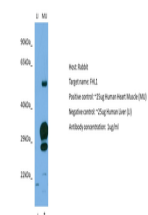
Description	Rabbit polyclonal antibody to FHL1
Species/Host	Rabbit
Reactivity	Animal, Bovine, Canine, Guinea pig, Human, Mouse, Rat, Sheep
Conjugation	Unconjugated
Tested Applications	IHC, WB
Immunogen	The immunogen is a synthetic peptide directed towards the C terminal region of human FHL1
Target	FHL1
Preservatives	Liquid. Purified antibody supplied in 1x PBS buffer with 0.09% (w/v) sodium azide and 2% sucrose.
Form/Appearance	Liquid. Purified antibody supplied in 1x PBS buffer with 0.09% (w/v) sodium azide and 2% sucrose.
Concentration	1.0 mg/ml
Storage	Maintain refrigerated at 2-8°C for up to 2 weeks. For long term storage store at -20°C in small aliquots to prevent freeze-thaw cycles.
Note	For research use only
Protein Sequence	Synthetic peptide located within the following region: YYCVDICYKNFVAKKCAGCKNPITGFGKGSVVAYEGQSWHDYCFHCKKCS
Clonality	Polyclonal
MW	32kDa
Uniprot ID	Q6IB30
NCBI	NP_001440
Expiration Date	12 months from date of receipt.



Host: Mouse,
Target Name:
FHL1, Sample
T...



Host: Rabbit,
Target Name:
FHL1, Sample ...



Host: Rabbit,
Target: FHL1,
Positive con...