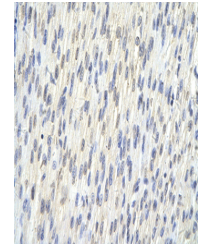


Product Datasheet

SAP30BP antibody (orb575025)

Description	Rabbit polyclonal antibody to SAP30BP
Species/Host	Rabbit
Reactivity	Human
Conjugation	Unconjugated
Tested Applications	IHC, WB
Immunogen	The immunogen is a synthetic peptide directed towards the N terminal region of human SAP30BP
Target	SAP30BP
Preservatives	Liquid. Purified antibody supplied in 1x PBS buffer with 0.09% (w/v) sodium azide and 2% sucrose.
Form/Appearance	Liquid. Purified antibody supplied in 1x PBS buffer with 0.09% (w/v) sodium azide and 2% sucrose.
Concentration	0.5 mg/ml
Storage	Maintain refrigerated at 2-8°C for up to 2 weeks. For long term storage store at -20°C in small aliquots to prevent freeze-thaw cycles.
Note	For research use only
Protein Sequence	Synthetic peptide located within the following region: AEEKGGLVSDAYGEDDFSRLLGGDEGDYEEEEEDENSRQSEDDDDSETEKPEA
Clonality	Polyclonal
MW	34kDa
Uniprot ID	Q9UHR5
NCBI	NP_037392
Expiration Date	12 months from date of receipt.



Rabbit Anti-SAP30BP antibody, Catalog Nu...



WB Suggested Anti-SAP30BP Antibody Titra...