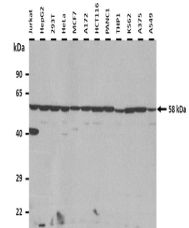


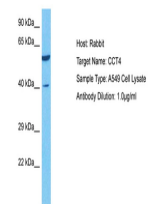
Product Datasheet

CCT4 antibody (orb575007)

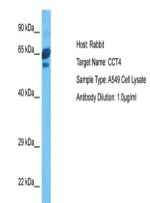
Description	Rabbit polyclonal antibody to CCT4
Species/Host	Rabbit
Reactivity	Animal, Bovine, Canine, Goat, Guinea pig, Human, Mouse, Rat, Yeast, Zebrafish
Conjugation	Unconjugated
Tested Applications	IHC, WB
Immunogen	The immunogen is a synthetic peptide directed towards the C terminal region of human CCT4
Target	CCT4
Preservatives	Liquid. Purified antibody supplied in 1x PBS buffer with 0.09% (w/v) sodium azide and 2% sucrose.
Form/Appearance	Liquid. Purified antibody supplied in 1x PBS buffer with 0.09% (w/v) sodium azide and 2% sucrose.
Concentration	0.5 mg/ml
Storage	Maintain refrigerated at 2-8°C for up to 2 weeks. For long term storage store at -20°C in small aliquots to prevent freeze-thaw cycles.
Note	For research use only
Protein Sequence	Synthetic peptide located within the following region: AFADAMEVIPSTLAENAGLNPISTVTELRNRHAQGEKTAGINVRKGGISN
Clonality	Polyclonal
MW	58kDa
Uniprot ID	Q53QP9
NCBI	NP_006421
Expiration Date	12 months from date of receipt.



25 ug of the indicated Human whole cell ...



Host: Rabbit, Target Name: CCT4, Sample ...



Host: Rabbit, Target Name: CCT4, Sample ...