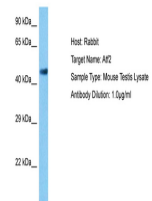


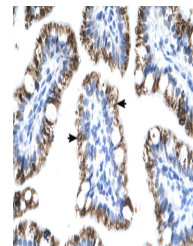
Product Datasheet

ATF2 antibody (orb574956)

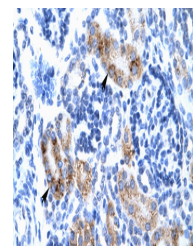
Description	Rabbit polyclonal antibody to ATF2
Species/Host	Rabbit
Reactivity	Human, Mouse
Conjugation	Unconjugated
Tested Applications	IHC, WB
Immunogen	The immunogen is a synthetic peptide directed towards the C terminal region of human ATF2
Target	ATF2
Preservatives	Liquid. Purified antibody supplied in 1x PBS buffer with 0.09% (w/v) sodium azide and 2% sucrose.
Form/Appearance	Liquid. Purified antibody supplied in 1x PBS buffer with 0.09% (w/v) sodium azide and 2% sucrose.
Concentration	1.0 mg/ml
Storage	Maintain refrigerated at 2-8°C for up to 2 weeks. For long term storage store at -20°C in small aliquots to prevent freeze-thaw cycles.
Note	For research use only
Protein Sequence	Synthetic peptide located within the following region: LRNEVAQLKQLLLAHKDCPVTAMQKKSGYHTADKDDSSDISVPSSPHTE
Clonality	Polyclonal
MW	55kDa
Uniprot ID	P15336
NCBI	NP_001871
Expiration Date	12 months from date of receipt.



Host: Mouse,
Target Name:
ATF2, Sample
T...



Human
Intestine



Human kidney