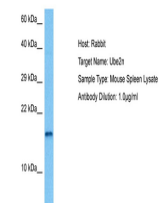


## Product Datasheet

### UBE2N antibody (orb574929)

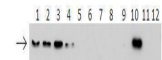
|                            |   |
|----------------------------|---|
| <b>Description</b>         | Rabbit polyclonal antibody to UBE2N   |
| <b>Species/Host</b>        | Rabbit  |
| <b>Reactivity</b>          | Human, Mouse  |
| <b>Conjugation</b>         | Unconjugated  |
| <b>Tested Applications</b> | IHC, WB   |
| <b>Immunogen</b>           | The immunogen is a synthetic peptide directed towards the middle region of human UBE2N  |
| <b>Target</b>              | UBE2N   |
| <b>Preservatives</b>       | Liquid. Purified antibody supplied in 1x PBS buffer with 0.09% (w/v) sodium azide and 2% sucrose.                                       |
| <b>Form/Appearance</b>     | Liquid. Purified antibody supplied in 1x PBS buffer with 0.09% (w/v) sodium azide and 2% sucrose.                                       |
| <b>Concentration</b>       | 1.0 mg/ml   |
| <b>Storage</b>             | Maintain refrigerated at 2-8°C for up to 2 weeks. For long term storage store at -20°C in small aliquots to prevent freeze-thaw cycles. |
| <b>Note</b>                | For research use only   |
| <b>Protein Sequence</b>    | Synthetic peptide located within the following region:<br>VDKLGRIKLDILKDKWSPALQIRTVLLSIQALLSAPNPDDPLANDVAEQW                            |
| <b>Clonality</b>           | Polyclonal  |
| <b>MW</b>                  | 17kDa   |
| <b>Uniprot ID</b>          | <a href="#">P61088</a>  |
| <b>NCBI</b>                | <a href="#">NP_003339</a>   |
| <b>Expiration Date</b>     | 12 months from date of receipt.   |



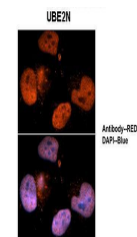
Host: Mouse,  
Target Name:  
UBE2N, Sample

...

UBE2N



Lanes: 1: 40 ng  
HIS-UBE2D1  
protein, 2: 4...



Sample Type:  
Human brain  
stem cells, Pri...