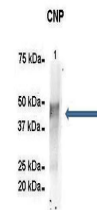


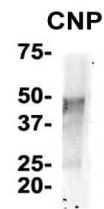
Product Datasheet

CNP antibody (orb574864)

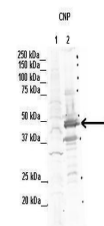
Description	Rabbit polyclonal antibody to CNP
Species/Host	Rabbit
Reactivity	Human, Mouse
Conjugation	Unconjugated
Tested Applications	IP, WB
Immunogen	The immunogen is a synthetic peptide directed towards the N terminal region of human CNP
Target	CNP
Preservatives	Liquid. Purified antibody supplied in 1x PBS buffer with 0.09% (w/v) sodium azide and 2% sucrose.
Form/Appearance	Liquid. Purified antibody supplied in 1x PBS buffer with 0.09% (w/v) sodium azide and 2% sucrose.
Concentration	1.0 mg/ml
Storage	Maintain refrigerated at 2-8°C for up to 2 weeks. For long term storage store at -20°C in small aliquots to prevent freeze-thaw cycles.
Note	For research use only
Protein Sequence	Synthetic peptide located within the following region: YKITPGARGAFSEEEKRLDEDLAAYCRRRDIRILVLDLDTNHERERLEQLF
Clonality	Polyclonal
MW	45kDa
Uniprot ID	P09543
NCBI	NP_149124
Expiration Date	12 months from date of receipt.



Amount and Sample Type:
500 ug mouse bra...



IP Suggested
Anti-CNP
Antibody,
Positive...



Lanes: 1.
Human NT-2
cells (60 ug)
lysat...