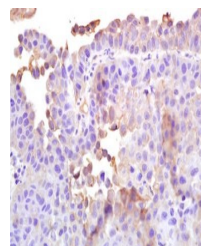


Product Datasheet

ATP1A1 (phospho-Ser16) antibody (orb5747)

Description	ATP1A1 (phospho-Ser16) antibody
Species/Host	Rabbit
Reactivity	Human
Conjugation	Unconjugated
Tested Applications	WB
Immunogen	KLH conjugated Synthesised phosphopeptide derived from human ATP1A1 around the phosphorylation site of Ser16 (AV(p-S)E)
Target	Phospho-ATP1A1 (Ser16)
Preservatives	0.01M TBS(pH7.4) with 1% rAlbumin, 0.03% Proclin300 and 50% Glycerol.
Form/Appearance	Liquid
Concentration	1mg/ml
Storage	Shipped at 4°C. Store at -20 °C for one year. Avoid repeated freeze/thaw cycles.
Note	For research use only
Isotype	IgG
Clonality	Polyclonal
MW	110 kDa
Uniprot ID	P05023
Dilution Range	WB=1:500-2000
Expiration Date	12 months from date of receipt.



Immunohistochemical analysis of formalin...