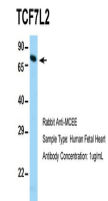


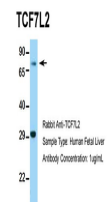
Product Datasheet

TCF7L2 antibody (orb574660)

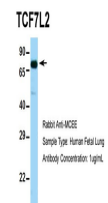
Description	Rabbit polyclonal antibody to TCF7L2
Species/Host	Rabbit
Reactivity	Human
Conjugation	Unconjugated
Tested Applications	WB
Immunogen	The immunogen is a synthetic peptide directed towards the middle region of human TCF7L2
Target	TCF7L2
Preservatives	Liquid. Purified antibody supplied in 1x PBS buffer with 0.09% (w/v) sodium azide and 2% sucrose.
Form/Appearance	Liquid. Purified antibody supplied in 1x PBS buffer with 0.09% (w/v) sodium azide and 2% sucrose.
Concentration	0.5 mg/ml
Storage	Maintain refrigerated at 2-8°C for up to 2 weeks. For long term storage store at -20°C in small aliquots to prevent freeze-thaw cycles.
Note	For research use only
Protein Sequence	Synthetic peptide located within the following region: GGFRHPYPTALTVNASMSRFPHPHMVPPHHTLHTTGIPHPAIVTPTVKQES
Clonality	Polyclonal
MW	65kDa
Uniprot ID	Q6FHW4
NCBI	NP_110383
Expiration Date	12 months from date of receipt.



Hum. Fetal Heart.



Hum. Fetal Liver.



Hum. Fetal Lung.