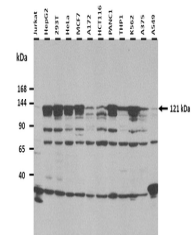


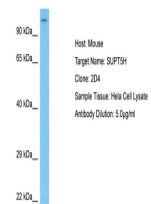
Product Datasheet

SUPT5H antibody (orb574637)

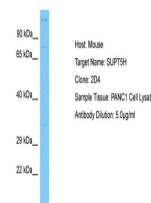
Description	Rabbit polyclonal antibody to SUPT5H
Species/Host	Rabbit
Reactivity	Animal, Bovine, Canine, Guinea pig, Human, Zebrafish
Conjugation	Unconjugated
Tested Applications	IHC, WB
Immunogen	The immunogen is a synthetic peptide directed towards the C terminal region of human SUPT5H
Target	SUPT5H
Preservatives	Liquid. Purified antibody supplied in 1x PBS buffer with 0.09% (w/v) sodium azide and 2% sucrose.
Form/Appearance	Liquid. Purified antibody supplied in 1x PBS buffer with 0.09% (w/v) sodium azide and 2% sucrose.
Concentration	0.5 mg/ml
Storage	Maintain refrigerated at 2-8°C for up to 2 weeks. For long term storage store at -20°C in small aliquots to prevent freeze-thaw cycles.
Note	For research use only
Protein Sequence	Synthetic peptide located within the following region: PYAAPSPQGSYQPSPSPQSYHQVAPSPAGYQNTHTSPASYHPTSPMAYQA
Clonality	Polyclonal
MW	121kDa
Uniprot ID	O00267
NCBI	NP_003160
Expiration Date	12 months from date of receipt.



25 ug of the indicated Human whole cell ...



Host: Rabbit, Target Name: SUPT5H, Sampl...



Host: Rabbit, Target Name: SUPT5H, Sampl...