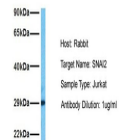


Product Datasheet

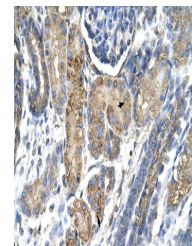
SNAI2 antibody (orb574596)

Description	Rabbit polyclonal antibody to SNAI2
Species/Host	Rabbit
Reactivity	Animal, Bovine, Canine, Guinea pig, Human, Mouse, Rat, Sheep, Yeast
Conjugation	Unconjugated
Tested Applications	IHC, WB
Immunogen	The immunogen is a synthetic peptide directed towards the middle region of human SNAI2
Target	SNAI2
Preservatives	Liquid. Purified antibody supplied in 1x PBS buffer with 0.09% (w/v) sodium azide and 2% sucrose.
Form/Appearance	Liquid. Purified antibody supplied in 1x PBS buffer with 0.09% (w/v) sodium azide and 2% sucrose.
Concentration	0.5 mg/ml
Storage	Maintain refrigerated at 2-8°C for up to 2 weeks. For long term storage store at -20°C in small aliquots to prevent freeze-thaw cycles.
Note	For research use only
Protein Sequence	Synthetic peptide located within the following region: SDTSSKDHSGSESPISDEEERLQSKLSDPHAIEAEKFQCNLCNKTYSTFS
Clonality	Polyclonal
MW	30kDa
Uniprot ID	O43623
NCBI	NP_003059
Expiration Date	12 months from date of receipt.

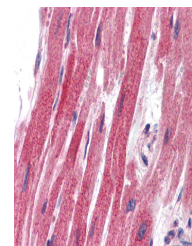
SNAI2



Host: Rabbit,
Target Name:
SNAI2,
Sample...



Human kidney



Testis