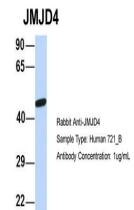


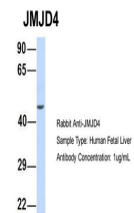
Product Datasheet

JMJD4 antibody (orb574595)

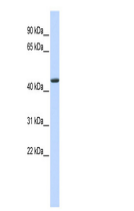
Description	Rabbit polyclonal antibody to JMJD4
Species/Host	Rabbit
Reactivity	Human
Conjugation	Unconjugated
Tested Applications	WB
Immunogen	The immunogen is a synthetic peptide directed towards the N terminal region of human JMJD4
Target	JMJD4
Preservatives	Liquid. Purified antibody supplied in 1x PBS buffer with 0.09% (w/v) sodium azide and 2% sucrose.
Form/Appearance	Liquid. Purified antibody supplied in 1x PBS buffer with 0.09% (w/v) sodium azide and 2% sucrose.
Concentration	0.5 mg/ml
Storage	Maintain refrigerated at 2-8°C for up to 2 weeks. For long term storage store at -20°C in small aliquots to prevent freeze-thaw cycles.
Note	For research use only
Protein Sequence	Synthetic peptide located within the following region: APGRVAFVSEPGAFSYADFVRGFLPNLPCVFSSAFTQGWGSRRRWVTPA
Clonality	Polyclonal
MW	52kDa
Uniprot ID	Q9H9V9
NCBI	NP_075383
Expiration Date	12 months from date of receipt.



Host: Rabbit,
Target Name:
JMJD4, Sample...



Host: Rabbit,
Target Name:
JMJD4, Sample...



WB Suggested
Anti-JMJD4
Antibody
Titrati...