

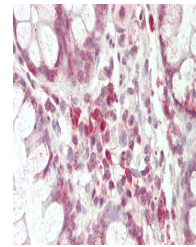
Product Datasheet

Pou3f1 antibody (orb574493)

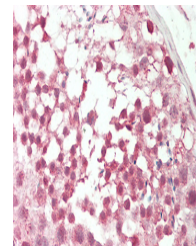
Description	Rabbit polyclonal antibody to Pou3f1
Species/Host	Rabbit
Reactivity	Animal, Bovine, Canine, Guinea pig, Human, Mouse, Rat, Zebrafish
Conjugation	Unconjugated
Tested Applications	WB
Immunogen	The immunogen is a synthetic peptide directed towards the C-terminal region of Rat Pou3f1
Target	Pou3f1
Preservatives	Liquid. Purified antibody supplied in 1x PBS buffer with 0.09% (w/v) sodium azide and 2% sucrose.
Form/Appearance	Liquid. Purified antibody supplied in 1x PBS buffer with 0.09% (w/v) sodium azide and 2% sucrose.
Concentration	0.5 mg/ml
Storage	Maintain refrigerated at 2-8°C for up to 2 weeks. For long term storage store at -20°C in small aliquots to prevent freeze-thaw cycles.
Note	For research use only
Protein Sequence	Synthetic peptide located within the following region: CPKPSAHEITGLADSLQLEKEVVRVWFCNRRQKEKRMTPAAGAGHPPMDD
Clonality	Polyclonal
MW	49kDa
Uniprot ID	P20267
NCBI	NP_620193
Expiration Date	12 months from date of receipt.



Host: Rabbit,
Target Name:
Pou3f1, Sampl...



Rabbit Anti-
Pou3f1
antibody,
Formalin Fi...



Rabbit Anti-
Pou3f1
antibody,
Formalin Fi...