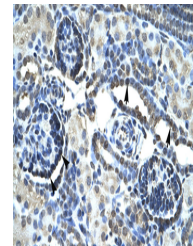


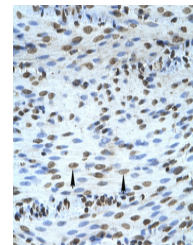
Product Datasheet

JMJD1A antibody (orb574439)

Description	Rabbit polyclonal antibody to JMJD1A
Species/Host	Rabbit
Reactivity	Human
Conjugation	Unconjugated
Tested Applications	IHC, WB
Immunogen	The immunogen is a synthetic peptide directed towards the C terminal region of human JMJD1A
Target	KDM3A
Preservatives	Liquid. Purified antibody supplied in 1x PBS buffer with 0.09% (w/v) sodium azide and 2% sucrose.
Form/Appearance	Liquid. Purified antibody supplied in 1x PBS buffer with 0.09% (w/v) sodium azide and 2% sucrose.
Concentration	1.0 mg/ml
Storage	Maintain refrigerated at 2-8°C for up to 2 weeks. For long term storage store at -20°C in small aliquots to prevent freeze-thaw cycles.
Note	For research use only
Protein Sequence	Synthetic peptide located within the following region: HNLYSCIKVAEDFVSPEHVKHCFWLTQEFRYLSQTHTNHEDKLQVKNVIY
Clonality	Polyclonal
MW	147kDa
Uniprot ID	Q53S72
NCBI	NP_060903
Expiration Date	12 months from date of receipt.



Human kidney



Human Smooth Muscle



WB Suggested Anti-JMJD1A Antibody Titrat...