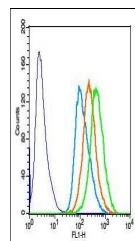


Product Datasheet

ATP citrate lyase (phospho-Ser455) antibody (orb5744)

| | |
|----------------------------|---|
| Description | ATP citrate lyase (phospho-Ser455) antibody |
| Species/Host | Rabbit |
| Reactivity | Human |
| Conjugation | Unconjugated |
| Tested Applications | WB |
| Immunogen | KLH conjugated Synthesised phosphopeptide derived from human ACLY around the phosphorylation site of Ser455 (TA(p-S)FS) |
| Target | phospho-ACLY (Ser455) |
| Preservatives | 0.01M TBS(pH7.4) with 1% rAlbumin, 0.03% Proclin300 and 50% Glycerol. |
| Form/Appearance | Liquid |
| Concentration | 1mg/ml |
| Storage | Shipped at 4°C. Store at -20 °C for one year. Avoid repeated freeze/thaw cycles. |
| Note | For research use only |
| Isotype | IgG |
| Clonality | Polyclonal |
| MW | 122 kDa |
| Uniprot ID | P53396 |
| Dilution Range | WB=1:500-2000 |
| Expiration Date | 12 months from date of receipt. |



Flow cytometric analysis of HeLa cells u...