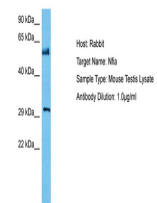


Product Datasheet

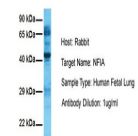
NFIA antibody (orb574350)

Description	Rabbit polyclonal antibody to NFIA
Species/Host	Rabbit
Reactivity	Human, Mouse
Conjugation	Unconjugated
Tested Applications	WB
Immunogen	The immunogen is a synthetic peptide directed towards the middle region of human NFIA
Target	NFIA
Preservatives	Liquid. Purified antibody supplied in 1x PBS buffer with 0.09% (w/v) sodium azide and 2% sucrose.
Form/Appearance	Liquid. Purified antibody supplied in 1x PBS buffer with 0.09% (w/v) sodium azide and 2% sucrose.
Concentration	0.5 mg/ml
Storage	Maintain refrigerated at 2-8°C for up to 2 weeks. For long term storage store at -20°C in small aliquots to prevent freeze-thaw cycles.
Note	For research use only
Protein Sequence	Synthetic peptide located within the following region: QHHRPVITGPRASPHATPSTLHFPTSPHQQPGPYFSHPAIRYHPQETLK
Clonality	Polyclonal
MW	55kDa
Uniprot ID	Q8TA97
NCBI	NP_005586
Expiration Date	12 months from date of receipt.

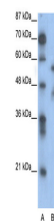


Host: Mouse,
Target Name:
NFIA, Sample
T...

NFIA



Host: Rabbit,
Target Name:
NFIA, Sample ...



WB Suggested
Anti-NFIA
Antibody
Titratio...