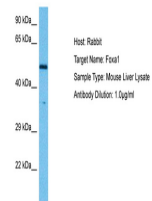


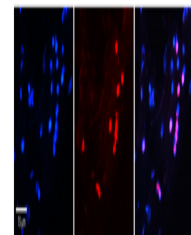
Product Datasheet

FOXA1 antibody (orb574302)

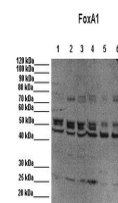
Description	Rabbit polyclonal antibody to FOXA1
Species/Host	Rabbit
Reactivity	Bovine, Canine, Guinea pig, Human, Mouse, Rat, Yeast, Zebrafish
Conjugation	Unconjugated
Tested Applications	IHC, WB
Immunogen	The immunogen is a synthetic peptide directed towards the C terminal region of human FOXA1
Target	FOXA1
Preservatives	Liquid. Purified antibody supplied in 1x PBS buffer with 0.09% (w/v) sodium azide and 2% sucrose.
Form/Appearance	Liquid. Purified antibody supplied in 1x PBS buffer with 0.09% (w/v) sodium azide and 2% sucrose.
Concentration	0.5 mg/ml
Storage	Maintain refrigerated at 2-8°C for up to 2 weeks. For long term storage store at -20°C in small aliquots to prevent freeze-thaw cycles.
Note	For research use only
Protein Sequence	Synthetic peptide located within the following region: SFNHFPFSINNLMSSSEQQHKLDFKAYEQALQYSPYGSTLPASLPLGSASV
Clonality	Polyclonal
MW	49kDa
Uniprot ID	Q0JTB6
NCBI	NP_004487
Expiration Date	12 months from date of receipt.



Host: Mouse,
Target Name:
FOXA1, Sample
...



Rabbit Anti-
FOXA1
antibody,
Catalog Numb...



WB Suggested
Anti-FOXA1
Antibody,
Positi...