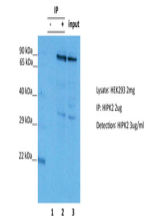


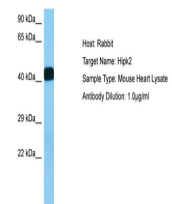
Product Datasheet

HIPK2 antibody (orb574278)

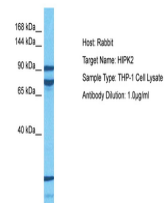
Description	Rabbit polyclonal antibody to HIPK2
Species/Host	Rabbit
Reactivity	Human, Mouse
Conjugation	Unconjugated
Tested Applications	IHC-P, WB
Immunogen	The immunogen is a synthetic peptide directed towards the middle region of Human HIPK2
Target	HIPK2
Preservatives	Liquid. Purified antibody supplied in 1x PBS buffer with 0.09% (w/v) sodium azide and 2% sucrose.
Form/Appearance	Liquid. Purified antibody supplied in 1x PBS buffer with 0.09% (w/v) sodium azide and 2% sucrose.
Concentration	0.5 mg/ml
Storage	Maintain refrigerated at 2-8°C for up to 2 weeks. For long term storage store at -20°C in small aliquots to prevent freeze-thaw cycles.
Note	For research use only
Protein Sequence	Synthetic peptide located within the following region: MWSLGCVIAELFLGWPLYGASEYDQIRYISQTQGLPAEYLLSAGTKTTR
Clonality	Polyclonal
MW	120kDa
Uniprot ID	Q9H2X6
NCBI	NP_073577
Expiration Date	12 months from date of receipt.



HIPK2 was immunoprecipitated from 2 mg H...



Host: Mouse, Target Name: HIPK2, Sample ...



Host: Rabbit, Target Name: HIPK2, Sample...