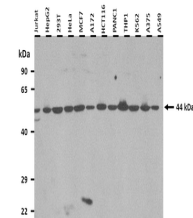


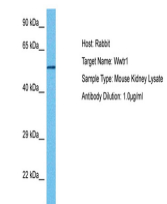
Product Datasheet

WWTR1 antibody (orb574257)

Description	Rabbit polyclonal antibody to WWTR1
Species/Host	Rabbit
Reactivity	Human, Mouse
Conjugation	Unconjugated
Tested Applications	WB
Immunogen	The immunogen is a synthetic peptide directed towards the N terminal region of human WWTR1
Target	WWTR1
Preservatives	Liquid. Purified antibody supplied in 1x PBS buffer with 0.09% (w/v) sodium azide and 2% sucrose.
Form/Appearance	Liquid. Purified antibody supplied in 1x PBS buffer with 0.09% (w/v) sodium azide and 2% sucrose.
Concentration	0.5 mg/ml
Storage	Maintain refrigerated at 2-8°C for up to 2 weeks. For long term storage store at -20°C in small aliquots to prevent freeze-thaw cycles.
Note	For research use only
Protein Sequence	Synthetic peptide located within the following region: PRLAGGAQHVRSHSSPASLQLGTGAGAAGSPAQQHAHLRQQSYDVTDELP
Clonality	Polyclonal
MW	44 kDa
Uniprot ID	Q9GZV5
NCBI	NP_056287
Expiration Date	12 months from date of receipt.

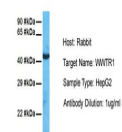


25 ug of the indicated Human whole cell ...



Host: Mouse, Target Name: WWTR1, Sample ...

WWTR1



Host: Rabbit, Target Name: WWTR1, Sample...