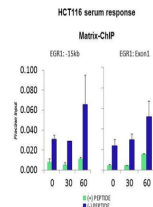


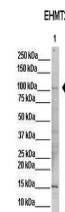
Product Datasheet

EHMT2 antibody (orb574235)

Description	Rabbit polyclonal antibody to EHMT2
Species/Host	Rabbit
Reactivity	Human
Conjugation	Unconjugated
Tested Applications	ChIP, WB
Immunogen	The immunogen is a synthetic peptide directed towards the N terminal region of human EHMT2
Target	EHMT2
Preservatives	Liquid. Purified antibody supplied in 1x PBS buffer with 0.09% (w/v) sodium azide and 2% sucrose.
Form/Appearance	Liquid. Purified antibody supplied in 1x PBS buffer with 0.09% (w/v) sodium azide and 2% sucrose.
Concentration	0.5 mg/ml
Storage	Maintain refrigerated at 2-8°C for up to 2 weeks. For long term storage store at -20°C in small aliquots to prevent freeze-thaw cycles.
Note	For research use only
Protein Sequence	Synthetic peptide located within the following region: VQSLAMRLLSMPGAQGAAAAGSEPPPATTSPEGQPKVHRARKTMSKPGNG
Clonality	Polyclonal
MW	132kDa
Uniprot ID	Q96KQ7
NCBI	NP_006700
Expiration Date	12 months from date of receipt.



Quiescent human colon carcinoma HCT116 c...



WB Suggested Anti-EHMT2 Antibody, Positi...



WB Suggested Anti-EHMT2 Antibody Titration