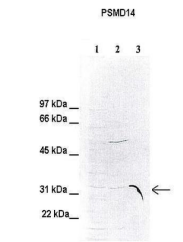


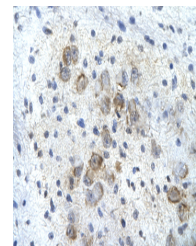
Product Datasheet

PSMD14 antibody (orb574212)

Description	Rabbit polyclonal antibody to PSMD14
Species/Host	Rabbit
Reactivity	Animal, Bovine, Guinea pig, Human, Mouse, Rat, Yeast, Zebrafish
Conjugation	Unconjugated
Tested Applications	WB
Immunogen	The immunogen is a synthetic peptide directed towards the C terminal region of human PSMD14
Target	PSMD14
Preservatives	Liquid. Purified antibody supplied in 1x PBS buffer with 0.09% (w/v) sodium azide and 2% sucrose.
Form/Appearance	Liquid. Purified antibody supplied in 1x PBS buffer with 0.09% (w/v) sodium azide and 2% sucrose.
Concentration	0.5 mg/ml
Storage	Maintain refrigerated at 2-8°C for up to 2 weeks. For long term storage store at -20°C in small aliquots to prevent freeze-thaw cycles.
Note	For research use only
Protein Sequence	Synthetic peptide located within the following region: EEDKMTPEQLAIKNVKGQDKRHLLEEHVDVLMSTNIVQCLAAMLDTVVK
Clonality	Polyclonal
MW	35kDa
Uniprot ID	O00487
NCBI	NP_005796
Expiration Date	12 months from date of receipt.



Lanes: 1. 100 ug HeLa cell lysate, 2. 10...



Rabbit Anti-PSMD14 Antibody, Paraffin Em...



WB Suggested Anti-PSMD14 Antibody Titrat...