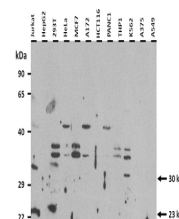


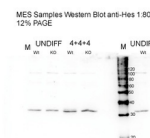
Product Datasheet

HES1 antibody (orb574166)

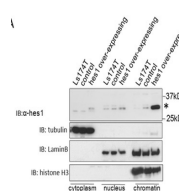
Description	Rabbit polyclonal antibody to HES1
Species/Host	Rabbit
Reactivity	Human, Mouse
Conjugation	Unconjugated
Tested Applications	IF, IHC, IP, WB
Immunogen	The immunogen is a synthetic peptide directed towards the N terminal region of human HES1
Target	HES1
Preservatives	Liquid. Purified antibody supplied in 1x PBS buffer with 0.09% (w/v) sodium azide and 2% sucrose.
Form/Appearance	Liquid. Purified antibody supplied in 1x PBS buffer with 0.09% (w/v) sodium azide and 2% sucrose.
Concentration	1.0 mg/ml
Storage	Maintain refrigerated at 2-8°C for up to 2 weeks. For long term storage store at -20°C in small aliquots to prevent freeze-thaw cycles.
Note	For research use only
Protein Sequence	Synthetic peptide located within the following region: NTTPDKPKTASEHRKSSKPIMEKRRRRARINESLSQLKTLILDALKKDDSSR
Clonality	Polyclonal
MW	30 kDa
Uniprot ID	Q14469
NCBI	NP_005515
Expiration Date	12 months from date of receipt.



25 ug of the indicated Human whole cell ...



HES1 antibody - N-terminal region (orb57...



HES1 antibody - N-terminal region (orb57...