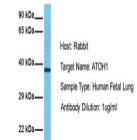


Product Datasheet

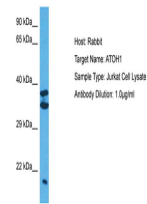
ATOH1 antibody (orb574162)

Description	Rabbit polyclonal antibody to ATOH1
Species/Host	Rabbit
Reactivity	Human, Mouse
Conjugation	Unconjugated
Tested Applications	IHC, WB
Immunogen	The immunogen is a synthetic peptide directed towards the middle region of human ATOH1
Target	ATOH1
Preservatives	Liquid. Purified antibody supplied in 1x PBS buffer with 0.09% (w/v) sodium azide and 2% sucrose.
Form/Appearance	Liquid. Purified antibody supplied in 1x PBS buffer with 0.09% (w/v) sodium azide and 2% sucrose.
Concentration	0.5 mg/ml
Storage	Maintain refrigerated at 2-8°C for up to 2 weeks. For long term storage store at -20°C in small aliquots to prevent freeze-thaw cycles.
Note	For research use only
Protein Sequence	Synthetic peptide located within the following region: QLDALHFSTFEDSALTAMMAQKNLSPSLPGSILQPVQEENSKTSPRSHR
Clonality	Polyclonal
MW	38 kDa
Uniprot ID	Q92858
NCBI	NP_005163
Expiration Date	12 months from date of receipt.

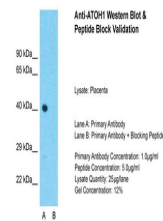
ATOH1



Host: Rabbit,
Target Name:
ATOH1,
Sample...



Host: Rabbit,
Target Name:
ATOH1,
Sample...



Host: Rabbit,
Target Name:
ATOH1,
Sample...