

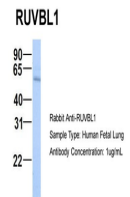
Product Datasheet

RUVBL1 antibody (orb574155)

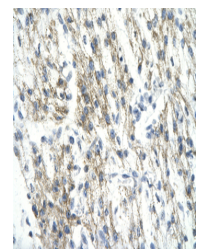
Description	Rabbit polyclonal antibody to RUVBL1
Species/Host	Rabbit
Reactivity	Human
Conjugation	Unconjugated
Tested Applications	WB
Immunogen	The immunogen is a synthetic peptide directed towards the N terminal region of human RUVBL1
Target	RUVBL1
Preservatives	Liquid. Purified antibody supplied in 1x PBS buffer with 0.09% (w/v) sodium azide and 2% sucrose.
Form/Appearance	Liquid. Purified antibody supplied in 1x PBS buffer with 0.09% (w/v) sodium azide and 2% sucrose.
Concentration	0.5 mg/ml
Storage	Maintain refrigerated at 2-8°C for up to 2 weeks. For long term storage store at -20°C in small aliquots to prevent freeze-thaw cycles.
Note	For research use only
Protein Sequence	Synthetic peptide located within the following region: KIEEVKSTTKTQRIASHSHVKGLGLDESLAKQAASGLVGVQENAREACGV
Clonality	Polyclonal
MW	50kDa
Uniprot ID	Q9Y265
NCBI	NP_003698
Expiration Date	12 months from date of receipt.



WB Suggested
Anti-RUVBL1
Antibody
Titrat...



Host: Rabbit,
Target Name:
RUVBL1,
Sampl...



Rabbit Anti-
RUVBL1
antibody,
Paraffin Em...