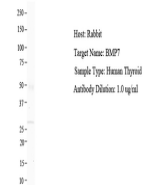


Product Datasheet

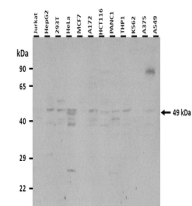
BMP7 antibody (orb574141)

Description	Rabbit polyclonal antibody to BMP7
Species/Host	Rabbit
Reactivity	Human
Conjugation	Unconjugated
Tested Applications	IHC, WB
Immunogen	The immunogen is a synthetic peptide directed towards the N terminal region of human BMP7
Target	BMP7
Preservatives	Liquid. Purified antibody supplied in 1x PBS buffer with 0.09% (w/v) sodium azide and 2% sucrose.
Form/Appearance	Liquid. Purified antibody supplied in 1x PBS buffer with 0.09% (w/v) sodium azide and 2% sucrose.
Concentration	1.0 mg/ml
Storage	Maintain refrigerated at 2-8°C for up to 2 weeks. For long term storage store at -20°C in small aliquots to prevent freeze-thaw cycles.
Note	For research use only
Protein Sequence	Synthetic peptide located within the following region: QGKHNSAPMFMLDLYNAMAVEEGGGPGGQGFSPYKAVFSTQGPPLASLQ
Clonality	Polyclonal
MW	49 kDa
Uniprot ID	P18075
NCBI	NP_001710
Expiration Date	12 months from date of receipt.

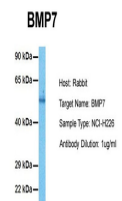


Host: Rabbit,
Target Name:
BMP7, Sample

...



25 ug of the
indicated
Human whole
cell ...



Host: Rabbit,
Target Name:
BMP7, Sample

...