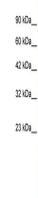


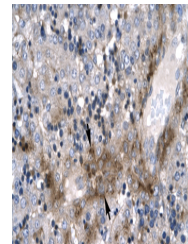
Product Datasheet

ZNF365 antibody (orb574120)

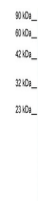
Description	Rabbit polyclonal antibody to ZNF365
Species/Host	Rabbit
Reactivity	Human
Conjugation	Unconjugated
Tested Applications	IHC, WB
Immunogen	The immunogen is a synthetic peptide directed towards the N terminal region of human ZNF365
Target	ZNF365
Preservatives	Liquid. Purified antibody supplied in 1x PBS buffer with 0.09% (w/v) sodium azide and 2% sucrose.
Form/Appearance	Liquid. Purified antibody supplied in 1x PBS buffer with 0.09% (w/v) sodium azide and 2% sucrose.
Concentration	1.0 mg/ml
Storage	Maintain refrigerated at 2-8°C for up to 2 weeks. For long term storage store at -20°C in small aliquots to prevent freeze-thaw cycles.
Note	For research use only
Protein Sequence	Synthetic peptide located within the following region: DHTRFRSLSSLRAHLEFSHSYEERTLLTKCSLFPCLKDLDLVTSSSELLKP
Clonality	Polyclonal
MW	38kDa
Uniprot ID	Q70YC6
NCBI	NP_955522
Expiration Date	12 months from date of receipt.



WB Suggested
Antibody
Titration: 0.2-1
u...



Rabbit Anti-
ZNF365
Antibody,
Paraffin Em...



WB Suggested
Anti-ZNF365
Antibody
Titrat...