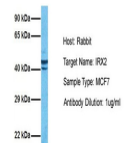


Product Datasheet

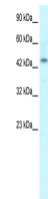
IRX2 antibody (orb574081)

Description	Rabbit polyclonal antibody to IRX2
Species/Host	Rabbit
Reactivity	Human
Conjugation	Unconjugated
Tested Applications	WB
Immunogen	The immunogen is a synthetic peptide directed towards the middle region of human IRX2
Target	IRX2
Preservatives	Liquid. Purified antibody supplied in 1x PBS buffer with 0.09% (w/v) sodium azide and 2% sucrose.
Form/Appearance	Liquid. Purified antibody supplied in 1x PBS buffer with 0.09% (w/v) sodium azide and 2% sucrose.
Concentration	1.0 mg/ml
Storage	Maintain refrigerated at 2-8°C for up to 2 weeks. For long term storage store at -20°C in small aliquots to prevent freeze-thaw cycles.
Note	For research use only
Protein Sequence	Synthetic peptide located within the following region: LEDDDDDEEGERGLAPPKVTSSPLTGLEAPLLSPPPEAAPRGGRKTPQ
Clonality	Polyclonal
MW	49kDa
Uniprot ID	Q9BZ11
NCBI	NP_150366
Expiration Date	12 months from date of receipt.

IRX2



Host: Rabbit,
Target Name:
IRX2, Sample ...



WB Suggested
Anti-IRX2
Antibody
Titration...