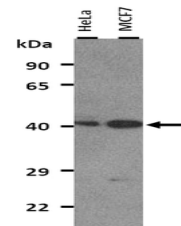


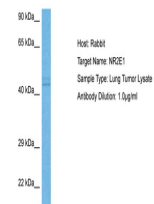
Product Datasheet

NR2E1 antibody (orb574040)

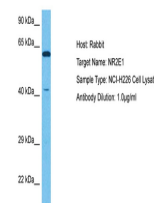
Description	Rabbit polyclonal antibody to NR2E1
Species/Host	Rabbit
Reactivity	Animal, Bovine, Canine, Guinea pig, Human, Mouse, Rat, Zebrafish
Conjugation	Unconjugated
Tested Applications	IHC, WB
Immunogen	The immunogen is a synthetic peptide directed towards the N terminal region of human NR2E1
Target	NR2E1
Preservatives	Liquid. Purified antibody supplied in 1x PBS buffer with 0.09% (w/v) sodium azide and 2% sucrose.
Form/Appearance	Liquid. Purified antibody supplied in 1x PBS buffer with 0.09% (w/v) sodium azide and 2% sucrose.
Concentration	0.5 mg/ml
Storage	Maintain refrigerated at 2-8°C for up to 2 weeks. For long term storage store at -20°C in small aliquots to prevent freeze-thaw cycles.
Note	For research use only
Application notes	Application Info: IHC Information: Colon, myenteric plexus
Protein Sequence	Synthetic peptide located within the following region: MSKPAGSTSRILDIPCKVCGDRSSGKHYGVYACDGC SGFFKRSIRRNRTY
Clonality	Polyclonal
MW	43 kDa
Uniprot ID	Q9Y466
NCBI	NP_003260
Expiration Date	12 months from date of receipt.



25 ug of HeLa and MCF7 whole cell extrac...



Host: Rabbit, Target Name: NR2E1, Sample...



Host: Rabbit, Target Name: NR2E1, Sample...