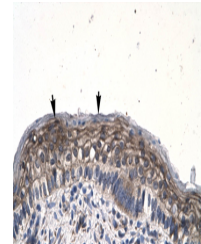


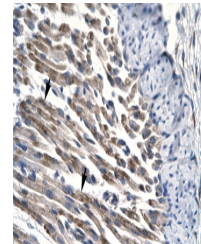
Product Datasheet

JMJD8 antibody (orb573992)

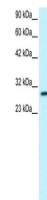
Description	Rabbit polyclonal antibody to JMJD8
Species/Host	Rabbit
Reactivity	Human
Conjugation	Unconjugated
Tested Applications	IHC, WB
Immunogen	The immunogen is a synthetic peptide directed towards the middle region of human LOC339123
Target	JMJD8
Preservatives	Liquid. Purified antibody supplied in 1x PBS buffer with 0.09% (w/v) sodium azide and 2% sucrose.
Form/Appearance	Liquid. Purified antibody supplied in 1x PBS buffer with 0.09% (w/v) sodium azide and 2% sucrose.
Concentration	0.5 mg/ml
Storage	Maintain refrigerated at 2-8°C for up to 2 weeks. For long term storage store at -20°C in small aliquots to prevent freeze-thaw cycles.
Note	For research use only
Protein Sequence	Synthetic peptide located within the following region: FGDRVRLSTANTYSYHKVDLPFQEYVEQLLHPQDPTSLGNDTLYFFGDN
Clonality	Polyclonal
MW	32kDa
Uniprot ID	B2RNS7
NCBI	NP_001005920
Expiration Date	12 months from date of receipt.



Human Spermatophore



Human Muscle



WB Suggested Anti-JMJD8 Antibody Titrati...