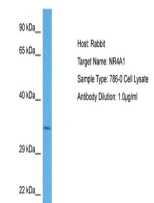


Product Datasheet

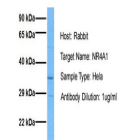
NR4A1 antibody (orb573976)

Description	Rabbit polyclonal antibody to NR4A1
Species/Host	Rabbit
Reactivity	Human
Conjugation	Unconjugated
Tested Applications	IHC, WB
Immunogen	The immunogen is a synthetic peptide directed towards the N terminal region of human NR4A1
Target	NR4A1
Preservatives	Liquid. Purified antibody supplied in 1x PBS buffer with 0.09% (w/v) sodium azide and 2% sucrose.
Form/Appearance	Liquid. Purified antibody supplied in 1x PBS buffer with 0.09% (w/v) sodium azide and 2% sucrose.
Concentration	1.0 mg/ml
Storage	Maintain refrigerated at 2-8°C for up to 2 weeks. For long term storage store at -20°C in small aliquots to prevent freeze-thaw cycles.
Note	For research use only
Protein Sequence	Synthetic peptide located within the following region: GTPAPSPGPRDHLASDPLTPEFIKPTMDLASPEAAPAAPALPSFSTFMD
Clonality	Polyclonal
MW	66kDa
Uniprot ID	P22736
NCBI	NP_775180
Expiration Date	12 months from date of receipt.

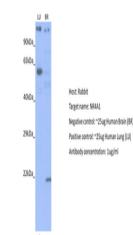


Host: Rabbit,
Target Name:
NR4A1,
Sample...

NR4A1



Host: Rabbit,
Target Name:
NR4A1,
Sample...



Host: Rabbit,
Target: NR4A1,
Positive co...