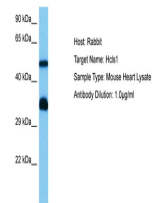


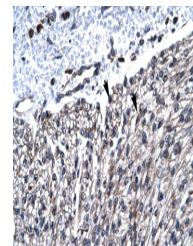
Product Datasheet

HCLS1 antibody (orb573966)

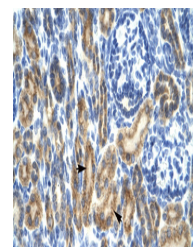
| | |
|----------------------------|---|
| Description | Rabbit polyclonal antibody to HCLS1 |
| Species/Host | Rabbit |
| Reactivity | Human, Mouse |
| Conjugation | Unconjugated |
| Tested Applications | IHC, WB |
| Immunogen | The immunogen is a synthetic peptide directed towards the N terminal region of human HCLS1 |
| Target | HCLS1 |
| Preservatives | Liquid. Purified antibody supplied in 1x PBS buffer with 0.09% (w/v) sodium azide and 2% sucrose. |
| Form/Appearance | Liquid. Purified antibody supplied in 1x PBS buffer with 0.09% (w/v) sodium azide and 2% sucrose. |
| Concentration | 0.5 mg/ml |
| Storage | Maintain refrigerated at 2-8°C for up to 2 weeks. For long term storage store at -20°C in small aliquots to prevent freeze-thaw cycles. |
| Note | For research use only |
| Protein Sequence | Synthetic peptide located within the following region: VNDISEKEQRWGAKTIEGSGRTEHINIHLRNVSEEHDVLRKKEMESGP |
| Clonality | Polyclonal |
| MW | 54kDa |
| Uniprot ID | P14317 |
| NCBI | NP_005326 |
| Expiration Date | 12 months from date of receipt. |



Host: Mouse,
Target Name:
HCLS1, Sample
...



Rabbit Anti-HCLS1 Antibody, Paraffin Emb...



Rabbit Anti-HCLS1 Antibody, Paraffin Emb...