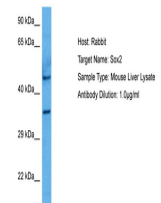


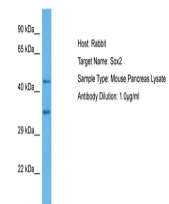
Product Datasheet

SOX2 antibody (orb573909)

Description	Rabbit polyclonal antibody to SOX2
Species/Host	Rabbit
Reactivity	Frog, Human, Mouse
Conjugation	Unconjugated
Tested Applications	IHC, WB
Immunogen	The immunogen is a synthetic peptide directed towards the N terminal region of human SOX2
Target	SOX2
Preservatives	Liquid. Purified antibody supplied in 1x PBS buffer with 0.09% (w/v) sodium azide and 2% sucrose.
Form/Appearance	Liquid. Purified antibody supplied in 1x PBS buffer with 0.09% (w/v) sodium azide and 2% sucrose.
Concentration	0.5 mg/ml
Storage	Maintain refrigerated at 2-8°C for up to 2 weeks. For long term storage store at -20°C in small aliquots to prevent freeze-thaw cycles.
Note	For research use only
Protein Sequence	Synthetic peptide located within the following region: MYNMMETELKPPGPQQTSGGGGNSTAAAAGGNQKNSPDRVKRPMNAFMV
Clonality	Polyclonal
MW	34kDa
Uniprot ID	P48431
NCBI	NP_003097
Expiration Date	12 months from date of receipt.

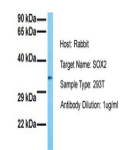


Sample Tissue:
Mouse Liver,
Antibody dil...



Sample Tissue:
Mouse
Pancreas,
Antibody ...

SOX2



Sample Tissue:
Human 293T,
Antibody dilu...