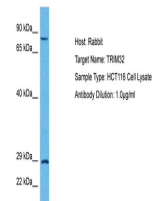


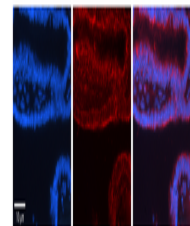
Product Datasheet

TRIM32 antibody (orb573899)

Description	Rabbit polyclonal antibody to TRIM32
Species/Host	Rabbit
Reactivity	Animal, Bovine, Canine, Guinea pig, Human, Mouse, Rat, Zebrafish
Conjugation	Unconjugated
Tested Applications	IHC, WB
Immunogen	The immunogen is a synthetic peptide directed towards the C terminal region of human TRIM32
Target	TRIM32
Preservatives	Liquid. Purified antibody supplied in 1x PBS buffer with 0.09% (w/v) sodium azide and 2% sucrose.
Form/Appearance	Liquid. Purified antibody supplied in 1x PBS buffer with 0.09% (w/v) sodium azide and 2% sucrose.
Concentration	0.5 mg/ml
Storage	Maintain refrigerated at 2-8°C for up to 2 weeks. For long term storage store at -20°C in small aliquots to prevent freeze-thaw cycles.
Note	For research use only
Protein Sequence	Synthetic peptide located within the following region: GFSIGSVGPDGQLGRQISHFFSENEDFRCIAGMVCVDARGDLIVADSSRKE
Clonality	Polyclonal
MW	72kDa
Uniprot ID	Q13049
NCBI	NP_036342
Expiration Date	12 months from date of receipt.



Host: Rabbit,
Target Name:
TRIM32,
Sampl...



Rabbit Anti-
TRIM32
Antibody,
Catalog Num...



WB Suggested
Anti-TRIM32
Antibody
Titrat...