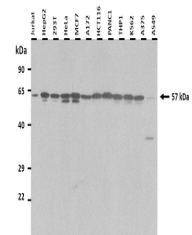


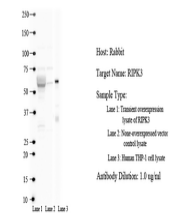
Product Datasheet

RIPK3 antibody (orb573829)

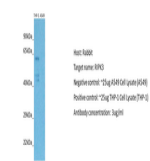
Description	Rabbit polyclonal antibody to RIPK3
Species/Host	Rabbit
Reactivity	Human
Conjugation	Unconjugated
Tested Applications	IHC, WB
Immunogen	The immunogen is a synthetic peptide directed towards the N terminal region of human RIPK3
Target	RIPK3
Preservatives	Liquid. Purified antibody supplied in 1x PBS buffer with 0.09% (w/v) sodium azide and 2% sucrose.
Form/Appearance	Liquid. Purified antibody supplied in 1x PBS buffer with 0.09% (w/v) sodium azide and 2% sucrose.
Concentration	1.0 mg/ml
Storage	Maintain refrigerated at 2-8°C for up to 2 weeks. For long term storage store at -20°C in small aliquots to prevent freeze-thaw cycles.
Note	For research use only
Protein Sequence	Synthetic peptide located within the following region: GGSQSGTGSGEPPGGLTGLYLAPELFVNVNRKASTASDVYSFGILMWAVLAG
Clonality	Polyclonal
MW	57 kDa
Uniprot ID	Q9Y572
NCBI	NP_006862
Expiration Date	12 months from date of receipt.



25 ug of the indicated Human whole cell ...



Host: Rabbit, Target Name: RIPK3, Sample...



Host: Rabbit, Target: RIPK3, Positive co...