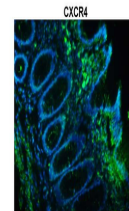


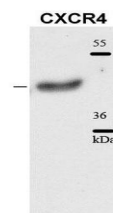
Product Datasheet

CXCR4 antibody (orb573686)

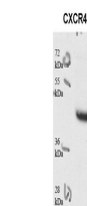
Description	Rabbit polyclonal antibody to CXCR4
Species/Host	Rabbit
Reactivity	Human, Mouse
Conjugation	Unconjugated
Tested Applications	FC, IHC, WB
Immunogen	The immunogen is a synthetic peptide directed towards the N terminal region of human CXCR4
Target	CXCR4
Preservatives	Liquid. Purified antibody supplied in 1x PBS buffer with 0.09% (w/v) sodium azide and 2% sucrose.
Form/Appearance	Liquid. Purified antibody supplied in 1x PBS buffer with 0.09% (w/v) sodium azide and 2% sucrose.
Concentration	0.5 mg/ml
Storage	Maintain refrigerated at 2-8°C for up to 2 weeks. For long term storage store at -20°C in small aliquots to prevent freeze-thaw cycles.
Note	For research use only
Protein Sequence	Synthetic peptide located within the following region: MEGISIYTS DNYTEEMGSGDYDSMKEPCFREANANFNKIFLPTIYSIIFL
Clonality	Polyclonal
MW	40 kDa
Uniprot ID	P61073
NCBI	NP_003458
Expiration Date	12 months from date of receipt.



Sample Type:
human colon
tissues
infected...



CXCR4
antibody - N-
terminal region
(orb573686)



CXCR4
antibody - N-
terminal region
(orb573686)