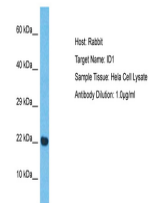


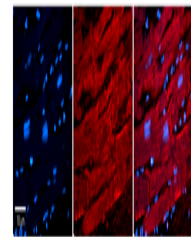
Product Datasheet

ID1 antibody (orb573650)

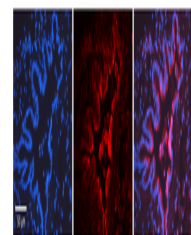
Description	Rabbit polyclonal antibody to ID1
Species/Host	Rabbit
Reactivity	Human
Conjugation	Unconjugated
Tested Applications	IHC, WB
Immunogen	The immunogen is a synthetic peptide directed towards the middle region of Human ID1
Target	ID1
Preservatives	Liquid. Purified antibody supplied in 1x PBS buffer with 0.09% (w/v) sodium azide and 2% sucrose.
Form/Appearance	Liquid. Purified antibody supplied in 1x PBS buffer with 0.09% (w/v) sodium azide and 2% sucrose.
Concentration	0.5 mg/ml
Storage	Maintain refrigerated at 2-8°C for up to 2 weeks. For long term storage store at -20°C in small aliquots to prevent freeze-thaw cycles.
Note	For research use only
Protein Sequence	Synthetic peptide located within the following region: YDMNGCY SRLKELVPTLPQNRK VSKVEILQHVIDYIRD LQLELNSESEVG
Clonality	Polyclonal
MW	17kDa
Uniprot ID	P41134
Expiration Date	12 months from date of receipt.



Host: Rabbit,
Target Name:
ID1, Sample T...



Rabbit Anti-ID1
Antibody,
Catalog
Number...



Rabbit Anti-ID1
Antibody,
Catalog
Number...