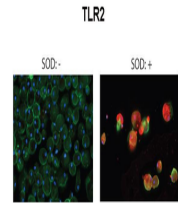


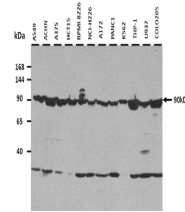
Product Datasheet

TLR2 antibody (orb573647)

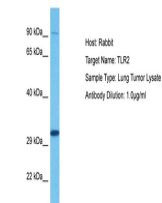
Description	Rabbit polyclonal antibody to TLR2
Species/Host	Rabbit
Reactivity	Human
Conjugation	Unconjugated
Tested Applications	IF, IHC-P, WB
Immunogen	The immunogen is a synthetic peptide directed towards the C terminal region of human TLR2
Target	TLR2
Preservatives	Liquid. Purified antibody supplied in 1x PBS buffer with 0.09% (w/v) sodium azide and 2% sucrose.
Form/Appearance	Liquid. Purified antibody supplied in 1x PBS buffer with 0.09% (w/v) sodium azide and 2% sucrose.
Concentration	0.5 mg/ml
Storage	Maintain refrigerated at 2-8°C for up to 2 weeks. For long term storage store at -20°C in small aliquots to prevent freeze-thaw cycles.
Note	For research use only
Protein Sequence	Synthetic peptide located within the following region: LEPIEKKAIPQRFCKLRKIMNTKTYLEWPMDEAQRGFWVNLRAAIKS
Clonality	Polyclonal
MW	90 kDa
Uniprot ID	O60603
NCBI	NP_003255
Expiration Date	12 months from date of receipt.



Sample Type:
Human
Macrophage
Cells, Gr...



25 ug of the
indicated
Human whole
cell ...



Host: Rabbit,
Target Name:
TLR2, Sample ...