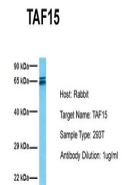


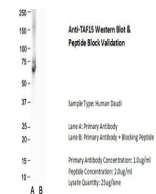
Product Datasheet

TAF15 antibody (orb573583)

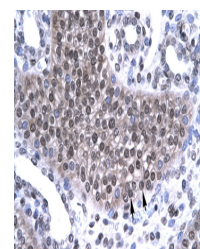
Description	Rabbit polyclonal antibody to TAF15
Species/Host	Rabbit
Reactivity	Bovine, Canine, Guinea pig, Human, Mouse, Rat, Yeast
Conjugation	Unconjugated
Tested Applications	IHC, WB
Immunogen	The immunogen is a synthetic peptide directed towards the N terminal region of human TAF15
Target	TAF15
Preservatives	Liquid. Purified antibody supplied in 1x PBS buffer with 0.09% (w/v) sodium azide and 2% sucrose.
Form/Appearance	Liquid. Purified antibody supplied in 1x PBS buffer with 0.09% (w/v) sodium azide and 2% sucrose.
Concentration	0.5 mg/ml
Storage	Maintain refrigerated at 2-8°C for up to 2 weeks. For long term storage store at -20°C in small aliquots to prevent freeze-thaw cycles.
Note	For research use only
Protein Sequence	Synthetic peptide located within the following region: TDSSYQNYSGYSSYGQSQSGYSQSYGGYENQKQSSYSQQPYNNQGQQQN
Clonality	Polyclonal
MW	61kDa
Uniprot ID	Q92804
NCBI	NP_631961
Expiration Date	12 months from date of receipt.



Host: Rabbit,
Target Name:
TAF15,
Sample...



Host: Rabbit,
Target Name:
TAF15,
Sample...



Rabbit Anti-TAF15 Antibody,
Paraffin Em...